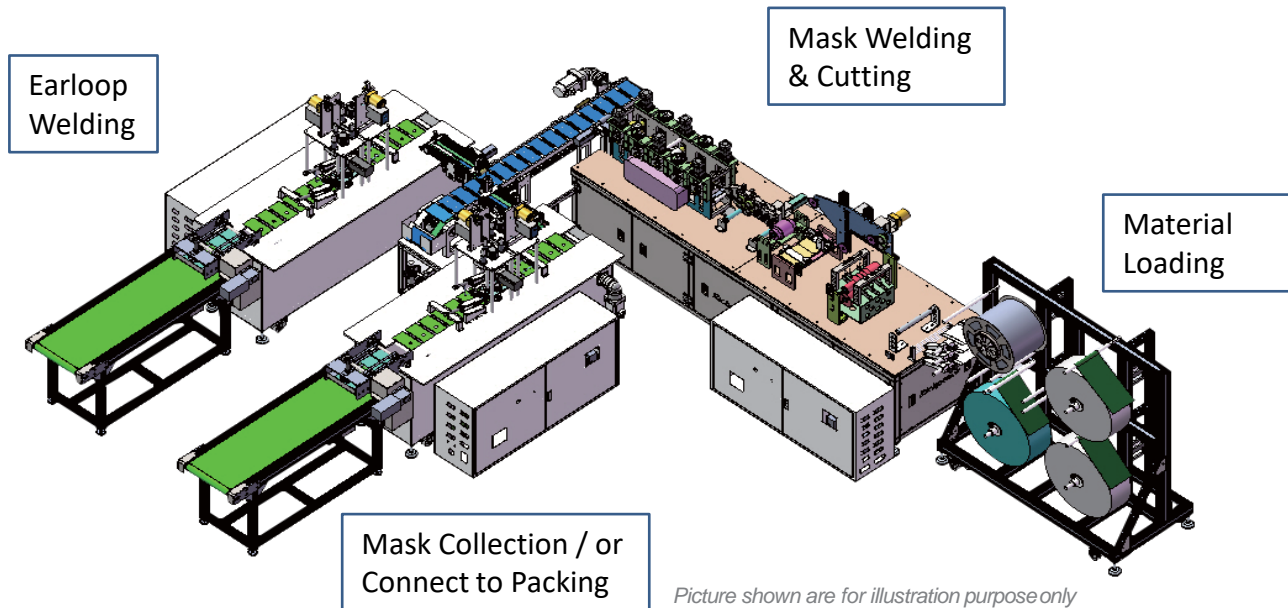


Richpeace Surgical Mask Automatic Production Line



Richpeace®



Picture shown are for illustration purpose only

Application:

The production line is designed to produce 3 layers Surgical Mask.

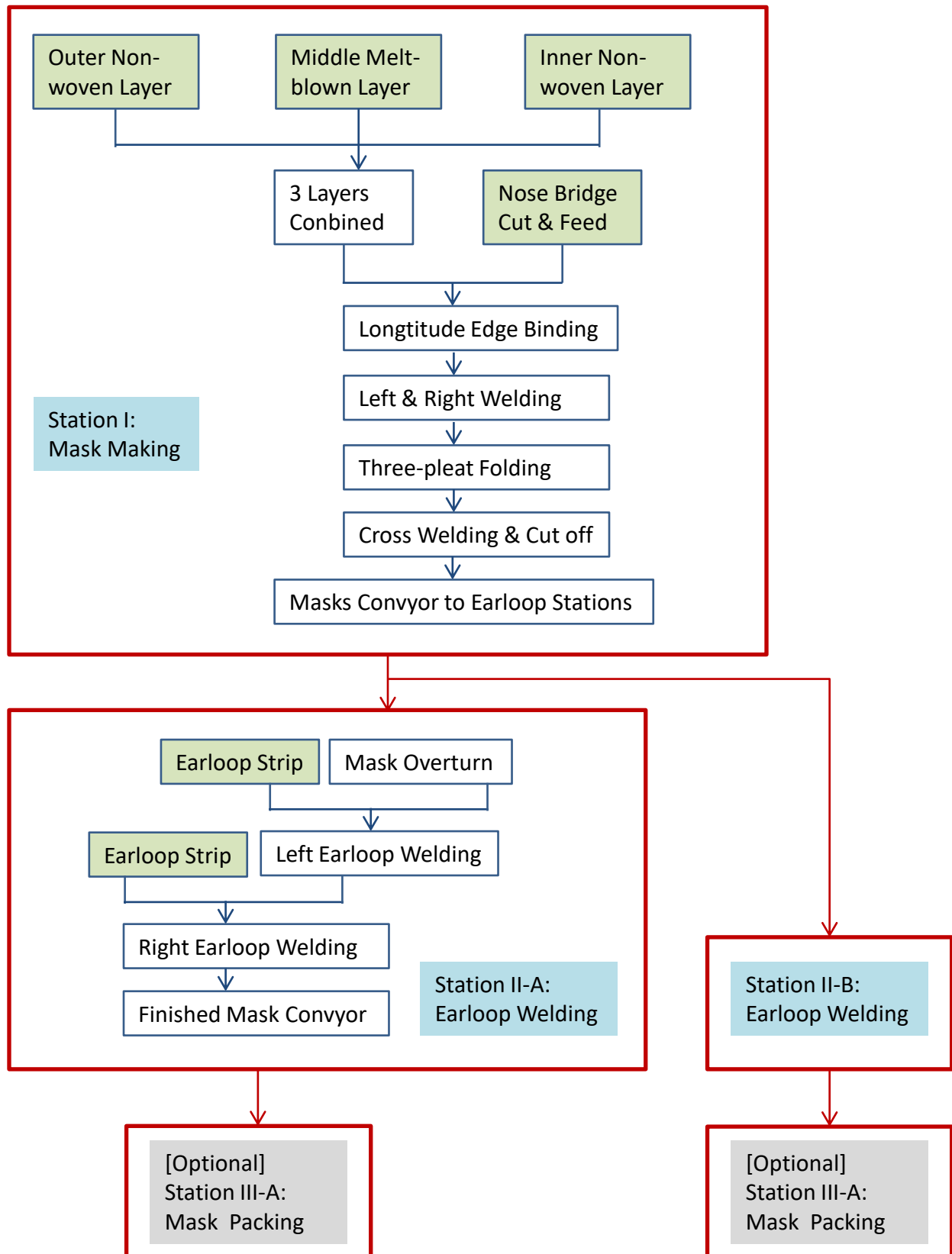
The surgical mask is the most commonly worn cheap and disposable masks, will limit the chance of inhaling large, infectious particles circulating near the face.



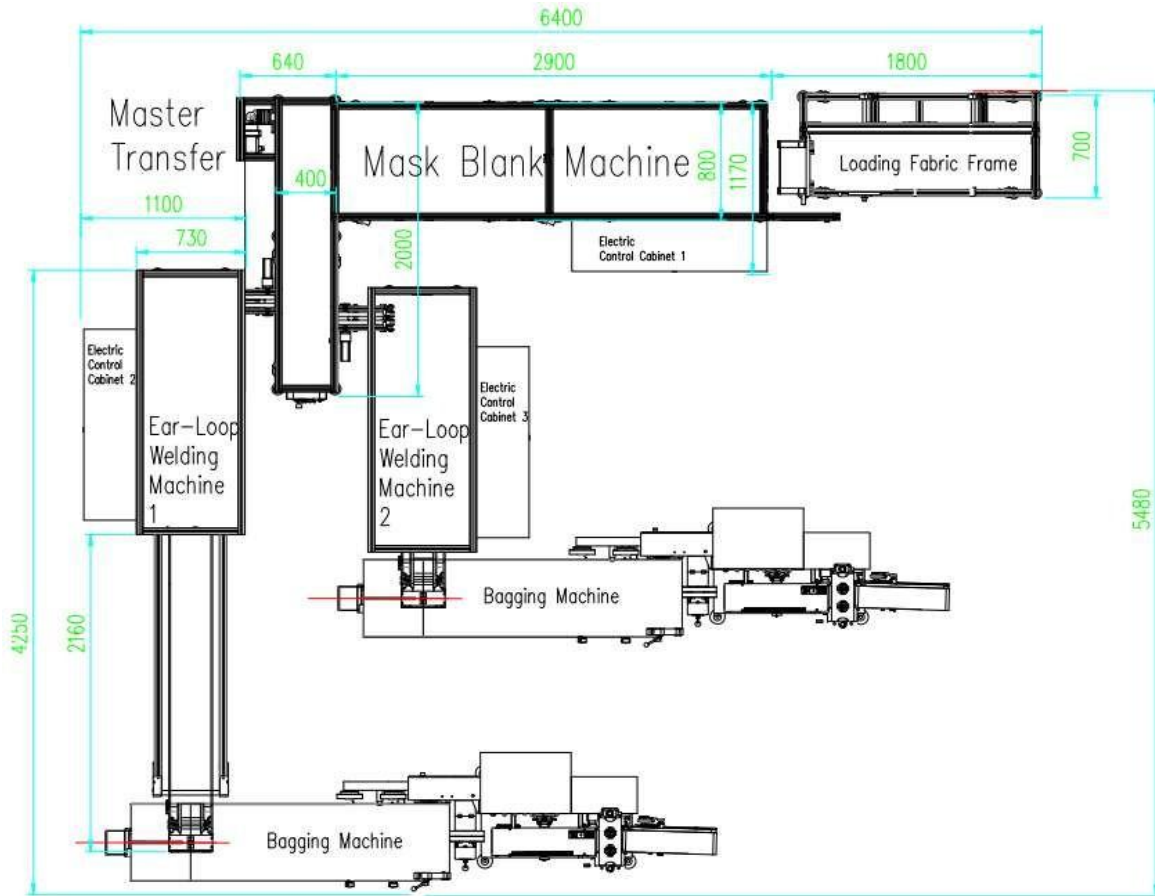
Main Features:

- Production adopted the 1-to-2 design, one set of mask making station connects two sets of earloop welding station.
- Auto-align three material rolls to be feed in machine, the Outer, Filter and Middle layers.
- Automatically fold and make mask pleats, which offer more room when wearing.
- Continuously welding the both side of 3 layers of material together by ultrasonic welding rollers, then cut into mask pieces.
- Nose-bridge can be integrated into mask with auto feeding, cutting and ultrasonic welding.
- Distribute the mask panels to welding stations separately, with two earloop welding stations working at full speed to reach the higher productivity.
- Cut Earloop strip and fix to mask by ultrasonic welding automatically.
- Collect finished masks from the conveyors
- [Optional] Stack up finished mask on conveyor as per the designed number then send into Packing machine to pack masks automatically.

Working process of Surgical Mask Production Line:



Layout of Richpeace Automatic Face Mask Production Line



Installation Area: 6400x5480mm

Parameter & Configuration :

Mask Type:	Disposable Medical Mask General Surgical Mask
Specification	175mm x 95mm
Speed	100pcs/min
Material	PP Nonwoven Fiber/ Meltbrown Fiber/
Layer Quantity	3/ Layers
Processing Mode	Ultrasonic Welding
Air pressure	0.6MPa
Power	20 KW
Voltage	220V/50HZ
Area	5000mm x 7000mm X 1800mm

Servo Motor	PANASONIC/ SCHNEIDER
Control System	Richpeace
Ultrasonic Generator	Richpeace,220V,20kHz,1.5kW
Sensor	OMRON/SICK
Pneumatic Component	SMC/FESTO
Belt	SAMSUNG/ BANDO
Main Structure	Assembly with welded steel & aluminium profiles
Bearing	NSK
Ball Screw	HIWIN
Safety Device	SICK

Richpeace Automatic Packing Machine



Application:

The Packing Machine is designed for automatic bagging operation for various mask. Connect to the automatic mask line or use as an independent packing machine.

Suitable for heated sealing film PVC, BOPP, OPP, CPP, Metalized PET film, aluminum-plastic film, paper film, paper plastic and other single-layer or multi-layers heat-sealed degradable material, etc.

Main Features:

- Three-servo motor control system, which can automatically set the bag length(within 400mm) to achieve specified length packaging;
- With its own anti-air bag,it can automatically identify the material position by detecting the product's base point, machine stops when the material is ran out and starts when there is material.
- Human-machine interface, parameter setting is convenient and easy, multi-specification products parameters can be stored and choose according to product sizes.
- Fault self-diagnosis function, clear fault and reset in one step.
- High-sensitivity photoelectric eye color mark tracking, digitally input sealing and cutting position, making sealing and cutting position more accurate.
- Independent PID control of temperature, suitable for various packaging materials.
- Positioning stop function, material won't stick on the blade , no waste of packaging films.
- Minimum complexity of the transmission system , stable and easy to maintain.
- All controls are realized by programs,convenient for function adjustment and technology upgrading, and meets intelligent operation.

Parameter & Configuration:

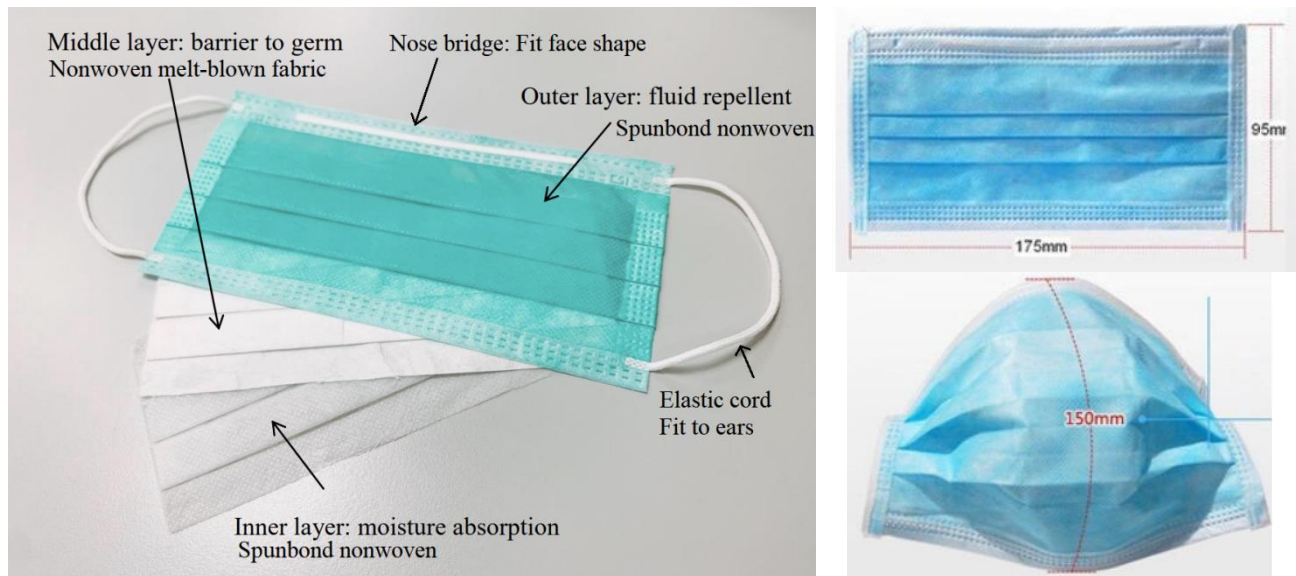
Length of Packaging Bags	≤ 400mm
Width of Packaging Bags	100-165mm
Product Height	Max. 55mm
Film length	Max. 360mm
Film roll diameter	Max. 320mm
Package speed	40-230bags/min (support 1-20pcs/bag)
Power supply	220V, 50/60Hz, 2.4kW
Machine dimension	4050mm×750mm×1450mm
Machine weight	≈300kg



Richpeace®

About Surgical Mask :

The production line is for produce 3 layers surgical mask, here is the mask specification:



FAQ:

Q: How many pieces Ultrasonic Device on each Surgical Mask Production Lines?

A: There are 7 sets Ultrasonic devcies in total, including: (1) Nose bridge ultrasonic fusing 1set; (2) Mask side welding 1set; (3) Longtitude welding & cutting 1set; (4) Left & right earloops welding 2 sets.

Q: What's the warranty term of the mask production line? Do you offer machine installation, training and after sale service?

A: All Richpeace equipments are covered by one year factory warranty. For ths mask production line, we provide free installation and customer training, or the buyer can undertake training in Richpeace factory. after the inital installation and training, Richpeace offer online service support.

Q: Are you a manufacture or a trading company?

A: Richpeace is a manufacturer located in Tianjin city, the factory passed ISO9001 quality management system certification, ISO14001 environmental protection system certification and ISO45001 occupational health and safety system certification. All Richpeace products have CE certification.

TIANJIN RICHPEACE AI CO., LIMITED

Factory Address: No.6 Baozhong Road,
Baodi Economic Development Zone, Tianjin
City, 301800 China

Wechat/whatsapp: 008615222643319
Email: balina@richpeace.com
Website: www.richpeace.com

