

INDUSTRIAL SEWING MACHINES

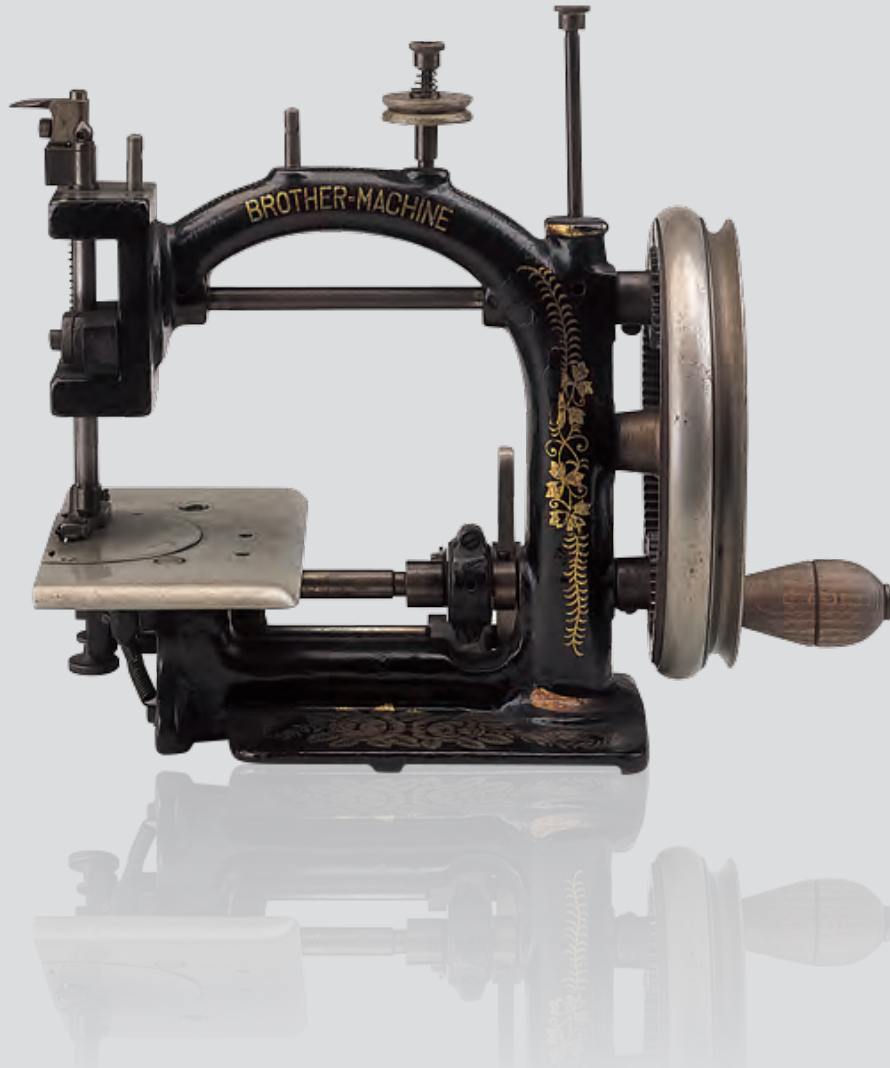
General Catalog of Industrial Sewing Machines

2016.11 vol.2

At your side.

1908

Establishment of Brother



Driving a New Era of Sewing Technology

2016

The Present time



Highly advanced technology with flexibility to instantly meet the needs of a new generation with creativity to challenge today's cutting edge development.

Brother has been leading the industry with our sewing machines and services throughout our 100 year history.

We have continually produced innovative sewing machines, including the world's first direct-drive model, the electronic sewing machine and the dry head technology.

In 2015, we launched the next-generation lock stitch sewing machine NEXIO S-7300A, and we have started a new challenge for IoT availability in 2016.

With the "At your side." spirit, always placing our customers first, Brother continues to contribute to the customer's business development to offer definitive value for their production needs.

Always placing the customer opinions as the initiative for value creation

We mirror the viewpoint of customers to create new value along with our highly advanced technology.

Brother keeps on searching for product excellence based on wide range of customer's needs, including accurate and good texture stitching, clean sewing, high energy saving's, low sound/vibration and user-friendly operation.





NEXIO

Brother Continues to Drive a New Era of Product Excellence and Industry Change

Since its inception in 1908, Brother has been at the forefront of product innovation, dedicated to delivering superior and innovative sewing technology to our customers.

While these innovative changes have now become the industry standard, our never-ending spirit of challenge and innovation inherited from our ancestors have helped us surmount many challenges in the marketplace and continue striving for product excellence.

It is with this spirit of pride and dedication that we introduce our new line of NEXIO industrial sewing machines.

This new line of NEXIO is for IoT era of industrial sewing machines with network connectivity that will set a new design standard in the industry.

This new brand name is derived from the words “Next” and “Society,” combining our vision to drive a new era of industry change with continual dedication to innovative product development, as well as our continued company commitment to forging strong customer relationships by being “At your side.”

S-7300A NEXIO

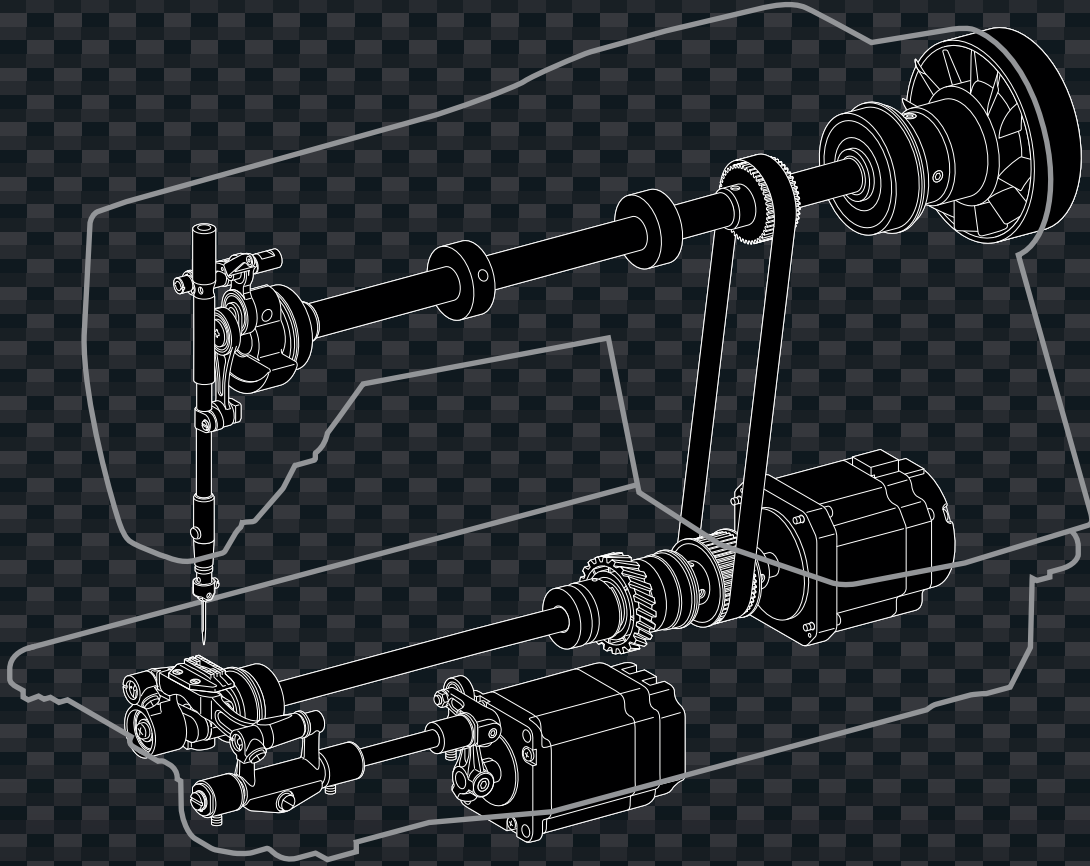
Single Needle Direct Drive Lock Stitcher with Electronic Feeding System and Thread Trimmer



World's first* Electronic Feed Control

DigiFlex Feed

*among the single needle lock stitchers



- Changeable feed motion for various materials
- Reduction of disposition of thread ends (short remaining thread and bird's nest reduction)*
- Clogging at cross-over seam reduction*
- Needle breakage prevention function is adopted
- The new hook enhances sewing capability for wide range materials
- Comfortable feeding
- Reverse sound minimized
- Clean sewing without oil staining
- User-intuitive color LCD with touch panel
- Useful functions are gathered in the hand switches
- USB port is equipped

*Premier specification only

	Feed	Lock stitch	Hook	Tread trimer	Thread wiper	Material thickness sensor	Lubrication type	Application	Max. sewing speed	Stich length	Needle breakage prevention function
S-7300A	Electric feed	✓	Rotary hook	Single action thread trimming	✓	-	Minimum/Semi dry	Medium, Heavy	5,000sti/min/ 4,500sti/min	5mm/7mm	✓
S-7300A Premier spec	Electric feed	✓	Rotary hook	Double action thread trimming	✓	✓	Minimum/Semi dry	Medium, Heavy	5,000sti/min/ 4,500sti/min	5mm/7mm	✓

BAS-H Series NEXIO

**BAS-311HN / BAS-326H /
BAS-326H-484 · 484SF /
BAS-341H / BAS-342H**

Direct Drive Programmable Electronic Pattern Sewing Machine





BAS-311HN

- Attractive sewing accurate to the sewing data
- High stiffness feed mechanism
- High productivity with max. sewing speed of 2,800sti/min
- Large screen LCD touch panel with programming functions
- Sewing area : 150 x 100 mm



BAS-326H

- Attractive sewing accurate to the sewing data
- High stiffness feed mechanism
- High productivity with max. sewing speed of 2,800sti/min
- Large screen LCD touch panel with programming functions
- Sewing area : 220 x 100mm



BAS-326H-484/484SF

- Treble hook equipped, reducing the frequency of bobbin changes
- Accurate and stout sewing
- Large screen LCD touch panel with programming functions
- Sewing area : 220 x 100mm



BAS-341H

- Attractive sewing accurate to the sewing data
- High stiffness feed mechanism
- High productivity with max. sewing speed of 2,800sti/min
- Large screen LCD touch panel with programming functions
- Sewing area : 250 x 160mm



BAS-342H

- Attractive sewing accurate to the sewing data
- High stiffness feed mechanism
- High productivity with max. sewing speed of 2,800sti/min
- Large screen LCD touch panel with programming functions
- Sewing area : 300 x 200mm

	Direct drive	Lock stitch	Hook	Max. sewing area	Stich length	Thread trimmer	Thread wiper	Max. sewing speed	Air consumption	Application
BAS-311HN	✓	✓	Double-capacity hook	150x100mm	0.05-12.7mm	✓	✓	2,800sti/min	1.8l/min	Medium/ Heavy/ Seat belt
BAS-326H	✓	✓	Double-capacity hook	220x100mm	0.05-12.7mm	✓	✓	2,800sti/min	1.8l/min	Medium/ Heavy/ Seat belt
BAS-326H-484 ·484SF	✓	✓	Treble hook	220x100mm	0.05-12.7mm	✓	✓	2,200sti/min	1.8l/min	Heavy/ Seat belt
BAS-341H	✓	✓	Double-capacity hook	250x160mm	0.05-12.7mm	✓	✓	2,800sti/min	1.8l/min	Heavy
BAS-342H	✓	✓	Double-capacity hook	300x200mm	0.05-12.7mm	✓	✓	2,800sti/min	1.8l/min	Heavy

**Providing solutions
that customers
truly appreciate**

PRODUCTIVITY

The machines acceleration from the start, sewing speed, and ease of operation, enhance the overall productivity in all aspects of machine operation.

RELIABILITY

With Brother-developed electrical equipments, we provide top-quality industrial sewing machines that can be used even in areas where the power situation is unstable, in the industry.

SEWING QUALITY

We provide high sewing quality with good stitch texture and a clean, neat finish.

COST PERFORMANCE

We contribute to the customer's profitability by providing energy saving products with high cost performance.

S-7220C S-7100A S-1000A SL-777B

Lock Stitch Sewing Machine



S-7220C



S-7100A



S-1000A



SL-777B

S-7220C

Single Needle Direct Drive Needle Feed Lock Stitcher with Thread Trimmer

- The needle feed mechanism prevents uneven material feeding
- Clean sewing with no oil staining
- Smooth sewing with direct drive system
- High energy saving

S-7100A

Single Needle Direct Drive Straight Lock Stitcher with Thread Trimmer

- Comfortable sewing with high speed sewing
- The new hook enhances sewing capability
- Highly reliable electrical equipment
- Environment conscious

S-1000A

Single Needle Straight Lock Stitcher

- Stable sewing with low thread tension

SL-777B

Single Needle Straight Lock Stitcher with Side Cutter

- The side cutter cuts the material end while sewing

	Direct Drive	Lock stitch	Feed	Thread trimmer	Thread wiper	Lubrication type	Application	Max. Sewing Speed	Needle Breakage Prevention function
S-7220C	✓	✓	Needle feed	✓	✓	Minimum lubrication	Medium/Heavy	5,000sti/min/4,000sti/min	✓
S-7100A	✓	✓	Bottom feed	✓	✓	Minimum lubrication	Light and Medium/Heavy	5,000sti/min*/4,000sti/min	✓
S-1000A	-	✓	Bottom feed	-	-	Pump lubrication	Medium/Heavy	4,000sti/min/3,500sti/min	-
SL-777B	-	✓	Bottom feed	-	-	Pump lubrication	Medium	4,500sti/min	-

*The stitch length is below 2.0mm

Z-8550A Z-8560A

Zigzag Lock Stitch Sewing Machine



Z-8560A

Z-8550A

Electronic Direct Drive Zigzag Lock Stitcher

- Clean sewing with no oil staining
- High energy saving
- Wide-variety pattern sewing is available

Z-8560A

Electronic Direct Drive Zigzag Lock Stitcher with Thread Trimmer

- The compact knife mechanism in a single unit enables simple maintenance
- Clean sewing with no oil staining
- High energy saving
- Wide-variety pattern sewing is available

	Direct drive	Stitch	Feed	Thread trimmer	Lubrication type	Max. sewing speed	Application
Z-8550A	✓	Zigzag stitch	Bottom feed	-	Semi dry	5,000sti/min	Light/Medium
Z-8560A	✓	Zigzag stitch	Bottom feed	✓	Semi dry	5,000sti/min	Light/Medium

T-8421C / T-8422C / T-8722C / T-8420C / T-8720C

Twin Needle Lock Stitch Sewing Machine



T-8422C

T-8421C

Twin Needle Direct Drive Lock Stitcher

- Direct drive / no thread trimmer type
The most suitable model for sewing of foundation garments
- Clean sewing with no oil staining

T-8422C

Twin Needle Direct Drive Lock Stitcher with Thread Trimmer

- Stable thread trimmer operation enables high productivity
- Clean sewing with no oil staining

T-8722C

Twin Needle Direct Drive Stitcher with Large Hook and Thread Trimmer

- Stable thread trimmer operation and large hook provide high productivity
- Clean sewing with no oil staining

T-8420C

Twin Needle Lock Stitcher

- High position of arm jaw and large arm pocket make handling material easier
- Easy to replace gauge parts

T-8720C

Twin Needle Lock Stitcher with Large Hook

- High position of arm jaw and large arm pocket make handling material easier
- Easy to replace gauge parts

	Direct drive	Lock stitch	2-Needle	Split needle bar	Bottom feed	Needle feed	Hook	Thread trimmer	Thread wiper	Quick back device	Needle breakage prevention
T-8421C	✓	✓	✓	-	✓	✓	Standard hook	-	-	✓	✓
T-8422C	✓	✓	✓	-	✓	✓	Standard hook	✓	✓	✓	✓
T-8722C	✓	✓	✓	-	✓*	✓	Double hook(1.8)	✓	✓	✓	✓
T-8420C	-	✓	✓	-	✓	✓	Standard hook	-	-	-	-
T-8720C	-	✓	✓	-	✓*	✓	Double hook(1.8)	-	-	-	-

*Max. stitch length is limited

T-8452C / T-8752C / T-8450C / T-8750C

Twin Needle Split Needle Bar Lock Stitch Sewing Machine



T-8452C

T-8452C

Twin Needle Direct Drive Split Needle Bar Lock Stitcher with Thread Trimmer

- Stable thread trimmer operation enables high productivity
- Clean sewing with no oil staining

T-8752C

Twin Needle Direct Drive Split Needle Bar Lock Stitcher with Large Hook and Thread Trimmer

- Stable thread trimmer operation and large hook provide high productivity
- Clean sewing with no oil staining

T-8450C

Twin Needle Split Needle Bar Lock Stitcher

- High position of arm jaw and large arm pocket make handling material easier
- Easy to replace gauge parts

T-8750C

Twin Needle Split Needle Bar Lock Stitcher with Large Hook

- High position of arm jaw and large arm pocket make handling material easier
- Easy to replace gauge parts

	Direct drive	Lock stitch	2-Needle	Split needle bar	Bottom feed	Needle feed	Hook	Thread trimmer	Thread wiper	Quick back device	Needle breakage prevention
T-8452C	✓	✓	✓	✓	✓	✓	Standard hook	✓	✓	✓	✓
T-8752C	✓	✓	✓	✓	✓*	✓	Double hook (1.8)	✓	✓	✓	✓
T-8450C	-	✓	✓	✓	✓	✓	Standard hook	-	-	-	-
T-8750C	-	✓	✓	✓	✓*	✓	Double hook (1.8)	-	-	-	-

*Max. stitch length is limited

HE-800B

Buttonhole Sewing Machine



HE-800B

HE-800B

Electronic Direct Drive Lockstitch Button Holer

- Less sewing troubles with the newly designed hook
- Beautiful sewing finishes even fine patterns
- High energy saving by direct drive system
- Easy and operator-intuitive operation panel (SD card available)

	Direct drive	Stitch	Button hole	Thread trimmer	Max. sewing speed	Application
HE-800B	✓	Lock stitch	✓ Button hole	✓	4,000sti/min	Woven, Knit

RH-9820

Buttonhole Sewing Machine



RH-9820

RH-9820

Electronic Eyelet Button Holer

- Max. sewing speed 2,500 sti/min improves productivity
- Easy-to-use operation panel
- Fine finishing of button holes
- Clean sewing without oil staining
- Large arm pocket allowing smooth material handling

	Direct drive	Stitch	Button hole	Thread trimmer	Max. sewing speed	Application
RH-9820	-	Double chain stitch	✓ Eyelet button hole	✓	2,500sti/min	Men's wear, Ladies' wear, Casual wear, Jeans, Trousers

BE-438FX II

Button Attaching Machine



BE-438FX II

BE-438FX II (Short remaining thread spec.)

Electronic Direct Drive Lockstitch Button Sewer

- Reduction of disposition of threads ends
- Attractive sewing accurate to the sewing data
- Low power consumption
- Low noise and low vibration
- Clean sewing without oil staining
- Digital tension is equipped as standard

	Direct drive	Stitch	Sewing area	Thread trimmer	Digital tension	Lubrication type	Max. sewing speed	Application
BE-438FX II	✓	Lock stitch	6.4x6.4mm	✓	✓	Semi dry	2,700sti/min	Button attaching

KE-430FX II / KE-430FS II

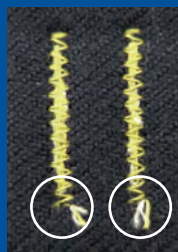
Bar Tacking Machine



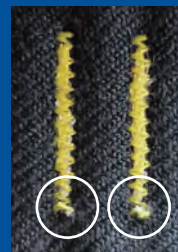
KE-430FX II

Reduction of Disposition of Thread Ends (Short Remaining Thread)

Renewed threadtrimmer cuts the thread, realizing short remaining threads. The disposition of thread ends after sewing can be reduced. Also, the thread nipper, equipped as standard*, minimizes thread cast off at sewing start and bird's nest.



conventional



KE-430FX II

Enhanced Sew-capability for Medium Materials

The brand new thread take-up stroke provides stable thread tightening. So that medium material specification covers heavy material usage.

*-5 spec.(heavy materials) is not included.

KE-430FX II (Short remaining thread spec.)

Electronic Direct Drive Lockstitch Bar Taker

- Reduction of disposition of threads ends
- Wide sew-capability
- High productivity with max. sewing speed, 3,200sti/min
- Clean sewing without oil staining
- Digital tension and Quick change device is equipped as standard

KE-430FS II (Short remaining thread spec.)

Electronic Direct Drive Lockstitch Bar Taker

- Reduction of disposition of threads ends
- Wide sew-capability
- High productivity with max. sewing speed, 3,200sti/min
- Attractive sewing accurate to the sewing data

	Direct drive	Stitch	Sewing area	Thread trimmer	Digital tension	Quick change device	Lubrication type	Max. sewing speed	Application
KE-430FX II	✓	Lock stitch	40×30mm	✓	✓	✓	Semi dry	3,200sti/min	Medium/Heavy/Knit/Foundation
KE-430FS II	✓	Lock stitch	40×30mm	✓	-	Option	Minimum lubrication	3,200sti/min	Medium/Heavy

DA-9270 DA-9280

Double Chain Stitch Sewing Machine



DA-9270

DA-9270

Twin Needle Feed Off the Arm Double Chain Stitcher

- Sew attractive balloon stitches onto thin materials without puckering

DA-9280

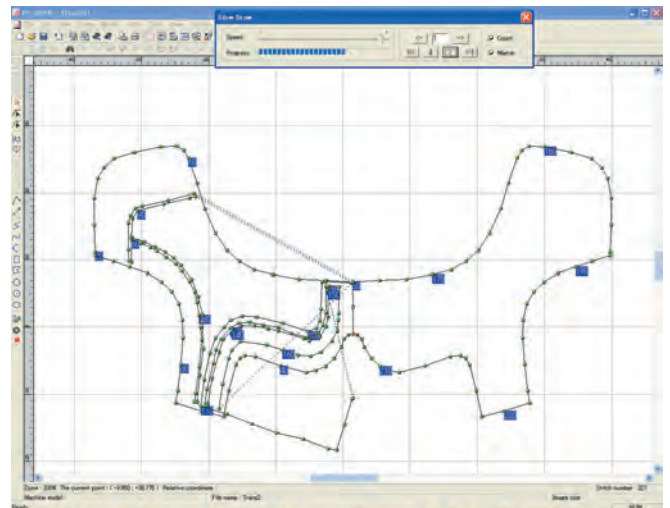
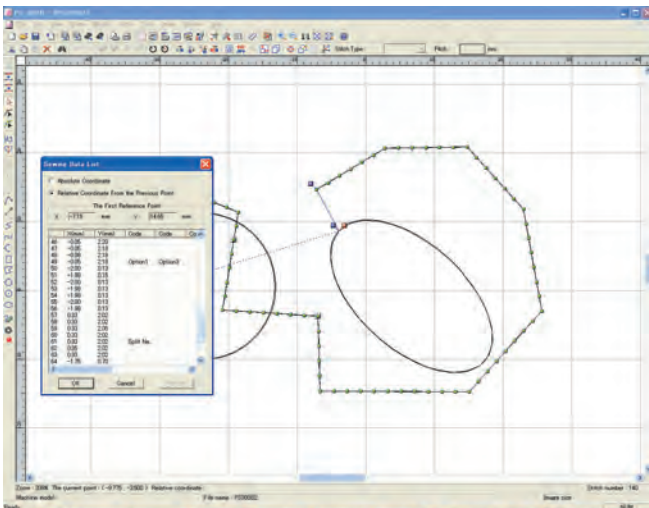
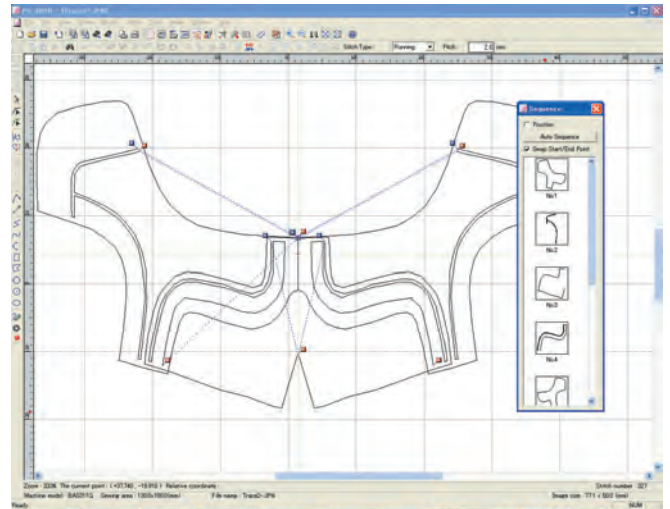
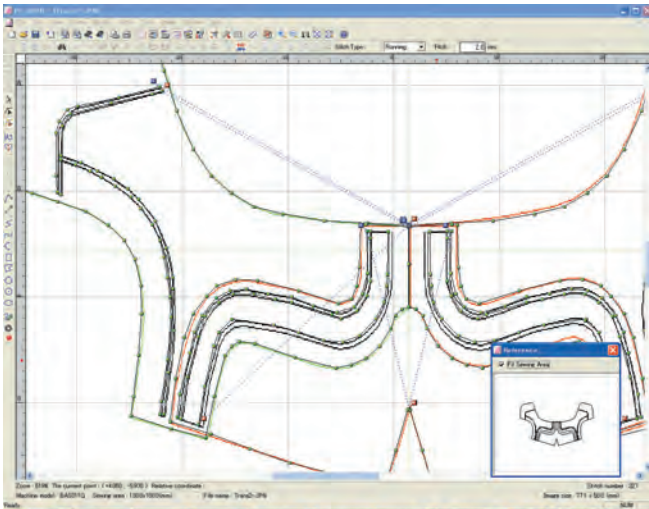
Twin Needle / Three Needle Feed Off the Arm Double Chain Stitcher

- A tractor-type presser foot can be used to easily ride over thick sections

	Stitch	Feed	No. of needles	Max. stitch length	Max. sewing speed	Application
DA-9270	Double chain stitch	Bottom feed	2 needles	Light material 3.0mm Medium material 3.4mm	4,000sti/min	Light/Medium
DA-9280	Double chain stitch	Bottom feed	2 needles/3 needles	4.2mm	4,000sti/min	Heavy/Extra heavy

PS-300B

Software



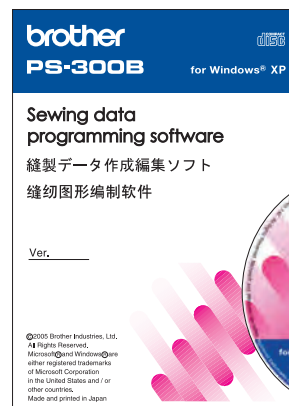
PS-300B

Sewing Data Programming Software

- Your original sewing patterns can be created enhancing the product's value
- Sewing pattern data can easily be modified
- It reduces the time for resizing and correcting
- Sewing pattern data for existing models and external data can also be used

Main function:

Creating, editing, setting and converting of sewing data
File input/output, data



INDUSTRIAL SEWING MACHINES BUSINESS GLOBAL NETWORK

Brother offers products and services that meet the needs of customers
all over the world through our global network



Japan

Group Headquarters
BROTHER INDUSTRIES, LTD.

Asia / Oceania

Manufacturing Facilities

BROTHER MACHINERY XIAN CO., LTD.
BROTHER MACHINERY VIETNAM CO., LTD.

Sales / Service Facilities

BROTHER MACHINERY SHANGHAI LTD.
(Shanghai, Beijing, Qingdao, Dalian, Hangzhou, Ningbo, Changzhou, Wenzhou, Dongguan, Fujian, Wuhan, Hefei, Zhengzhou)

BROTHER MACHINERY (ASIA) LIMITED
(Hong Kong)

BROTHER INTERNATIONAL (VIETNAM) CO., LTD.
(Ho Chi Minh, Hanoi)

BROTHER INTERNATIONAL SINGAPORE PTE LTD.
(Singapore, Dhaka, Chittagong)

PT. BROTHER INTERNATIONAL SALES INDONESIA
(Jakarta)

BROTHER INTERNATIONAL (INDIA) PVT. LTD.
(Delhi, Bangalore, Chennai, Kolkata, Mumbai)



America

Sales / Service Facilities

BROTHER INTERNATIONAL CORPORATION
(New Jersey, Tennessee, Los Angeles)

BROTHER INTERNATIONAL DE CHILE LTDA.

BROTHER INTERNATIONAL CORPORATION ARGENTINA S.R.L.

Europe / Middle East / Africa

Sales / Service Facilities

BROTHER INTERNATIONALE INDUSTRIEMASCHINEN GmbH

BROTHER INTERNATIONALE INDUSTRIEMASCHINEN GmbH (Italian Branch)

Please read instruction manual before using the machine for safety operation.
-Product specifications are subject to change for improvement without notice.
-Photographs are for illustration purpose. They may not represent actual operating conditions and may display optional parts.



CHINA	BROTHER MACHINERY SHANGHAI LTD.	www.brother.cn/	+86-21-3135-3355
ASIA	BROTHER MACHINERY (ASIA) LTD.	www.brother.com.hk/	+852-2777-0010
EUROPE AFRICA, MIDDLE EAST	BROTHER INTERNATIONALE INDUSTRIEMASCHINEN GmbH	www.brother-industrial.com/	+49-2822-6090
AMERICA	BROTHER INTERNATIONAL CORPORATION	www.brother-usa.com/	+1-908-704-1700

brother

BROTHER INDUSTRIES, LTD.

1-5, Kitajizoyama, Noda-cho, Kariya-shi, Aichi 448-0803, Japan.
Phone: 81-566-95-0088 Fax: 81-566-25-3721 <http://www.brother.com/>

2016.11 I609115B Vol.2